

ESSENTIAL HUMAN TRAFFICKING TRAINING IN HEALTH CARE



“The information is very valuable. I have a better understanding of how to assess an individual that may be a victim.”

— Pasadena workshop attendee

“Should be mandatory training for ALL health care workers.”

— Loma Linda workshop attendee

OVERVIEW

Join fellow health care professionals for an immersive human trafficking learning experience that dives beyond the 101 of traditional workshops. Our leaders will begin with a brief overview of these crimes and their health connections. You'll then learn about the specific health impacts of trafficking, along with tools for identification and assessment including trauma-informed care principles, barriers to disclosure, screening tools and ways to handle documentation.

In addition, the workshop will cover the provider's role in response and referrals. You'll have the chance to apply your knowledge with peers through exploring case studies and brainstorming policies and procedures that you can implement in your own setting.



Human Trafficking: A Social and Racial Justice Issue

Our workshop leaders seek to help health professionals understand this issue of social and racial justice. While human trafficking crimes trap people of all genders, cultures, races and backgrounds, they unduly affect people of color, LGBTQI youth and other marginalized groups.

Throughout the training, you'll hear inclusive language and learn processes that will empower you to take victims' well-being into account. You'll also gain skills in assessing people across different backgrounds, inclusive of all skin types and pigments.



For more information, visit <https://hasc.org/trafficking>.

Sponsored by Arizona State University Edson College of Nursing and Health Innovation and HASC.



COURSE OBJECTIVES

Following this program, you'll be able to:

1

Recognize the red flags of human trafficking in a clinical or community setting.

2

Apply professional, ethical, caring, trauma-informed and sensitive approaches when working with trafficking victims and survivors.

3

Advocate for those who have endured trafficking by assisting them in getting needed services and resources.

4

Develop skills in identifying trafficking victims and survivors by knowing what to look for, what questions to ask and how to create a place of safety.

5

Understand how health care and community health professionals make decisions in human trafficking cases, and brainstorm ways to make decisions.

WHO SHOULD ATTEND?

This workshop is geared toward doctors, nurses, nurse practitioners, social workers, health care administrators and those involved in reception, patient registration, discharge coordination and related areas. We encourage hospitals to share this opportunity with community partners such as law enforcement, clinics/neighboring hospitals, university/academic partners, nonprofit organizations and anyone else who may benefit.



Continuing Education Credits

AMA PRA Category 1 Credits: 3 CME credit hours

Nursing Continuing Professional Development (NCPD) Credits: 3 credit hours

Social Work Approved Continuing Education (ACE): 3 credit hours

Interprofessional Continuing Education Credits (IPCE): 3 credit hours



ACHE Credit: Participants may earn up to 4 ACHE Qualified Education Hours per session toward initial certification or recertification of the Fellow of the American College of Healthcare Executives (FACHE) designation



HRCI Credit: Participants may earn up to 4 HRCI Qualified Education Hours toward initial certification

Approved Continuing Education



As a Jointly Accredited Organization, Arizona State University is approved to offer social work continuing education by the Association of Social Work Board's (ASWB) Approved Continuing Education (ACE) program. Organizations, not individual courses, are approved under this program. State and provincial regulatory boards have the final authority to determine whether an individual course may be accepted for continuing education credit. Arizona State University maintains responsibility for this course. Social workers completing this course will receive 3 credit hours of continuing education credits.



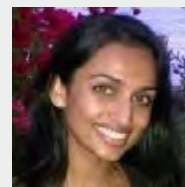
SHRM: Hospital Association of Southern California (HASC) is recognized by SHRM to offer Professional Development Credits (PDCs) for SHRM-CP® or SHRM-SCP® recertification activities.

FACULTY



Samantha L. Calvin, PhD(c), MHI, MBA

An anti-trafficking advocate and leader in Arizona and the United States, Samantha has used education and training to debunk the myths around human trafficking. She is active in community-focused work and research to understand how the issue of human trafficking is evolving. Over the past ten years with Arizona State University's (ASU) Edson College of Nursing and Innovation, Samantha developed the Edson Human Trafficking Awareness Program, which she currently oversees. She is expanding this work to include a program for K-12 educators. She has served as a consultant for the U.S. Department of Justice and regularly speaks at conferences and panels throughout Arizona.



Tejal (TJ) Patel, Esq., CPHRM

A licensed attorney and insurance broker with over 20 years of experience, TJ has for the past eight years served as associate risk management counsel for Cedars-Sinai Health System in Los Angeles. In this role, she has led the development and implementation of multidisciplinary human trafficking trainings for clinical providers and hospital support staff. She continues overseeing the trainings and customizes each to include focused discussion about who traffickers target and how, red flags often displayed by those being trafficked, and appropriate trauma-informed care response by providers.



In support of improving patient care, Arizona State University is jointly accredited by the Accreditation Council for Continuing Medical Education (ACCME), the Accreditation Council for Pharmacy Education (ACPE), and the American Nurses Credentialing Center (ANCC) to provide continuing education for the health care team.

REGISTER NOW

Essential Human Trafficking Training in Health Care - LA

CHA Hollywood Presbyterian Medical Center

1300 North Vermont Avenue

Los Angeles, CA 90027

Classroom: Medical Staff Conference Room

Program date:

SESSION 1 - TUESDAY, FEB. 3, 2026

SESSION 2 - THURSDAY, FEB. 5, 2026

Program cost:

Free for CHA Hollywood Presbyterian staff

REGISTER NOW

Scan the QR code to register online,
or visit <https://qrco.de/hasc-EHTT>



IMPORTANT INFORMATION

Registration deadline: Jan. 30, 2026.

You may be photographed or videotaped at the event. HASC reserves the right to use these photos and videos in promotional, marketing, educational and other materials.

SPECIAL NEEDS OR QUESTIONS

For ADA assistance or for any questions about this program, please contact Sherita Aquino, saquino@hasc.org or (213) 538-0767.



